

DATE	REV	AMENDMENTS
13/04/2026	A	DRAFT DA ISSUE
20/04/2026	B	DA ISSUE

**PROJECT**  
 SOUTH GEORGE TOWN PRIMARY SCHOOL  
 FRANKLIN STREET, GEORGE TOWN

**CLIENT**  
 DEPARTMENT FOR EDUCATION,  
 CHILDREN AND YOUNG PEOPLE

**DRAWING TITLE**  
 LANDSCAPE SITE PLAN

**LANDSCAPE ARCHITECTS**  
**REALM studios**

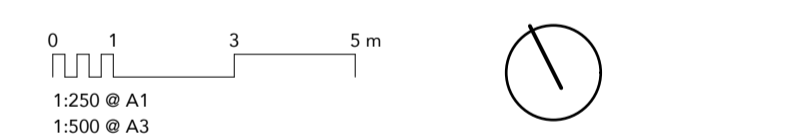
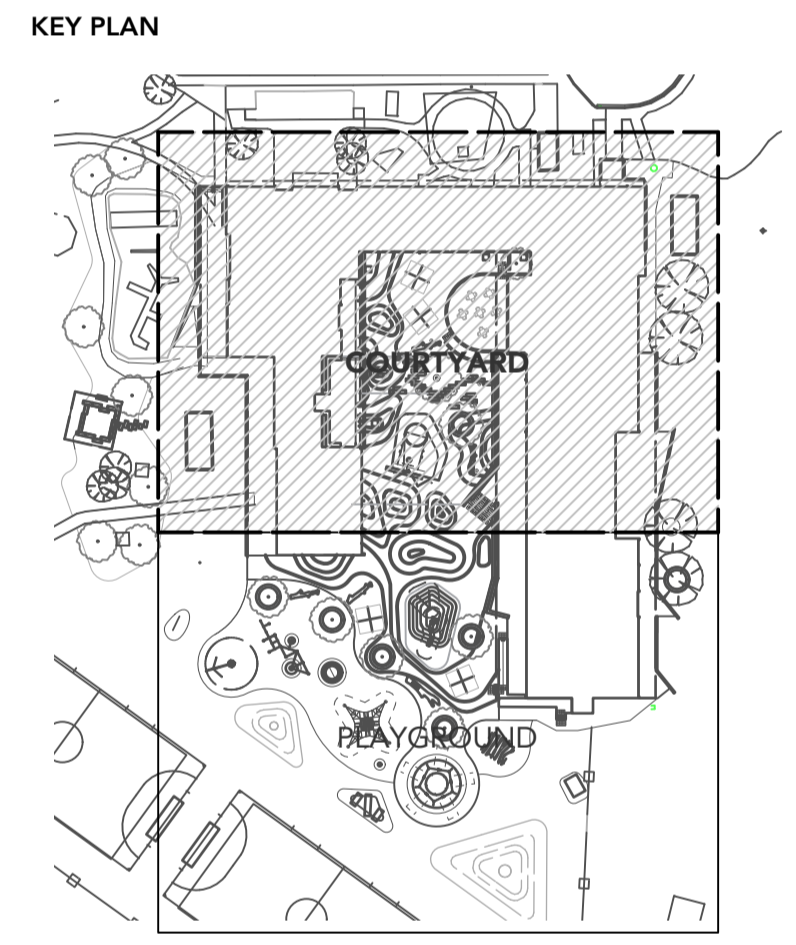
DRAWN	CHECKED	SCALE @ A1
BR	AH	1:100

**STATUS**  
 DRAFT DEVELOPMENT APPLICATION  
 NOT FOR CONSTRUCTION

DRAWING NO.	REVISION
25026-L100	B



- DRAWING NOTES:**
1. Mounds in the asphalt courtyard with painted 'contour' graphics
  2. Tiered brick seating edge
  3. Concrete footpath and veranda
  4. Painted handball courts
  5. 450mm H Timber deck with brick edge and steps
  6. Log furniture, including plinth mounted benches
  7. 400mm H sandstone block and brick retaining edge with seating nooks and tables
  8. Large evergreen shade tree in raised lawn area
  9. Half-court basketball area
  10. Staircase integrated into tiered brick seating edge
  11. Ramped and stepped access to paved veranda side



DATE	REV	AMENDMENTS
13/04/2026	A	DRAFT DA ISSUE
20/04/2026	B	DA ISSUE

**PROJECT**  
 SOUTH GEORGE TOWN PRIMARY SCHOOL  
 FRANKLIN STREET, GEORGE TOWN

**CLIENT**  
 DEPARTMENT FOR EDUCATION, CHILDREN AND YOUNG PEOPLE

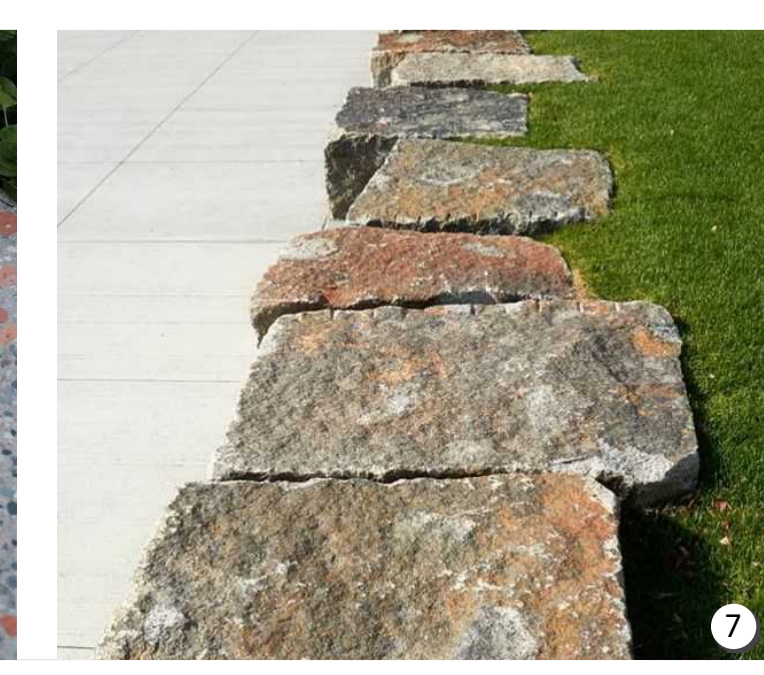
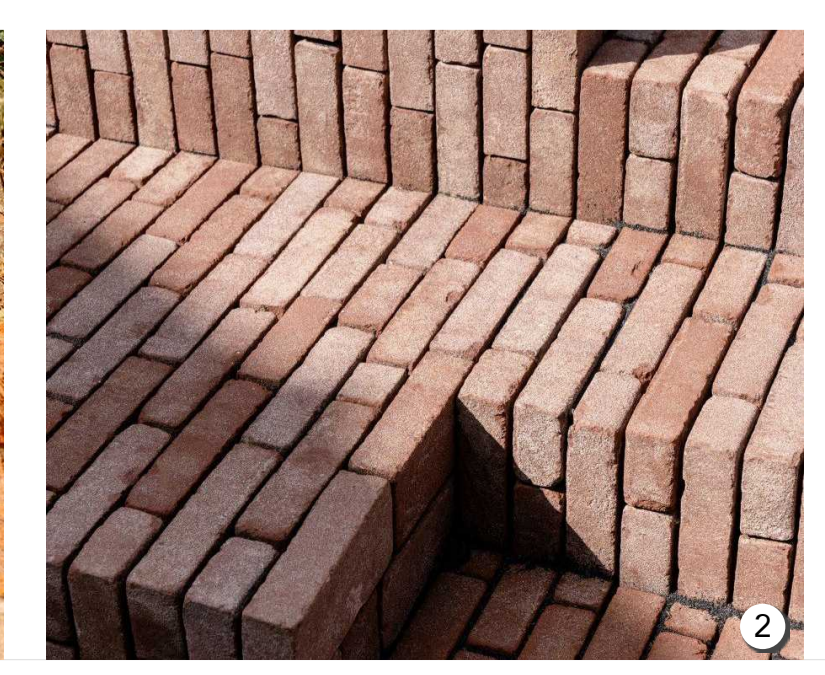
**DRAWING TITLE**  
 COURTYARD LANDSCAPE PLAN

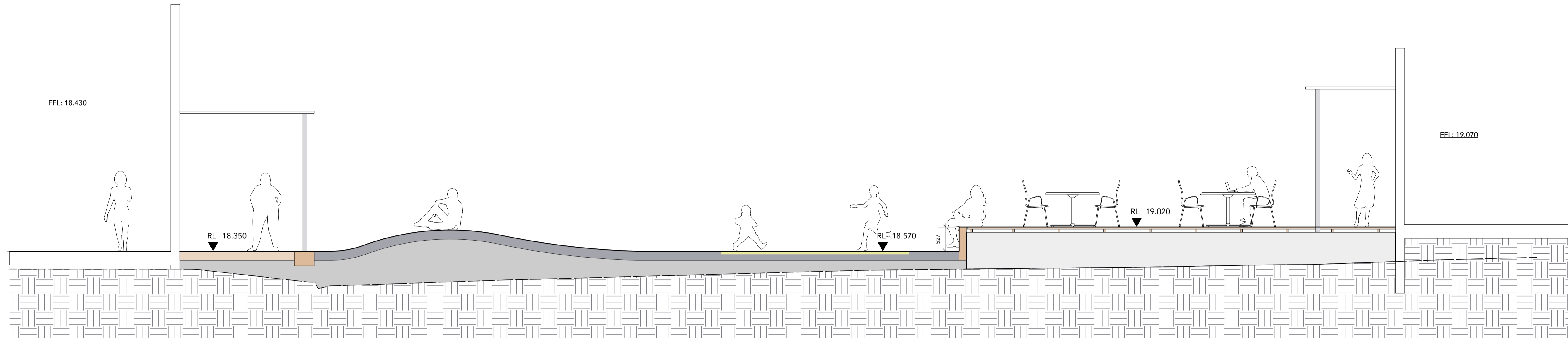
**LANDSCAPE ARCHITECTS**  
**REALM** studios

**DRAWN** BR      **CHECKED** AH      **SCALE @ A1** 1:100

**STATUS**  
 DRAFT DEVELOPMENT APPLICATION  
 NOT FOR CONSTRUCTION

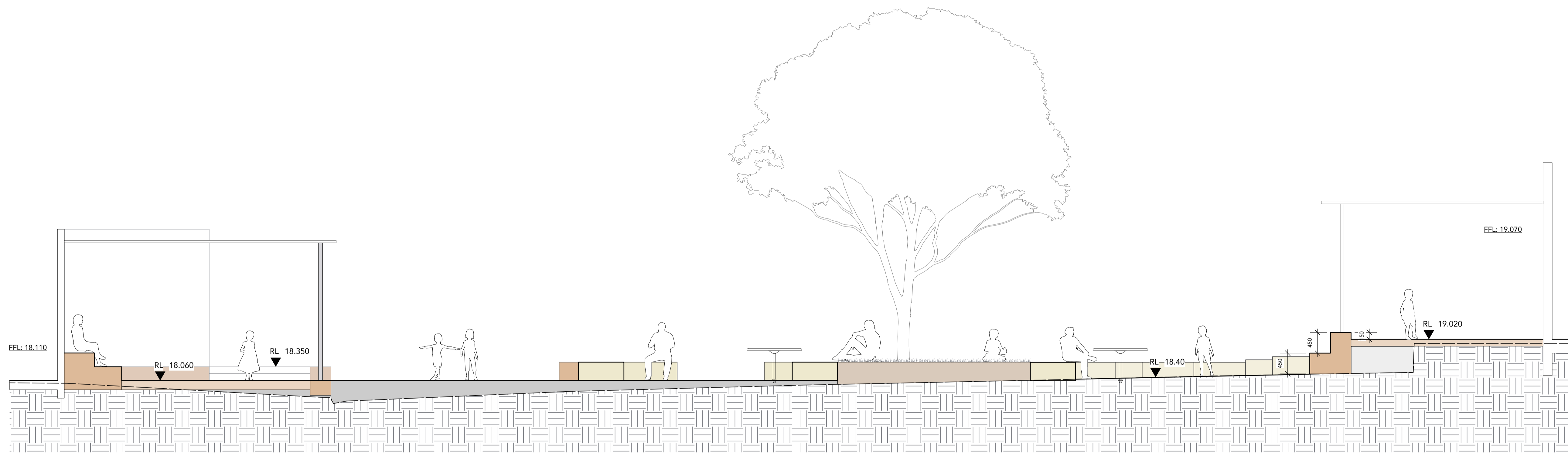
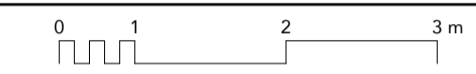
**DRAWING NO.** 25026-L201      **REVISION** B





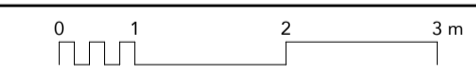
SECTION 1 - UPPER COURTYARD

Scale: 1:50

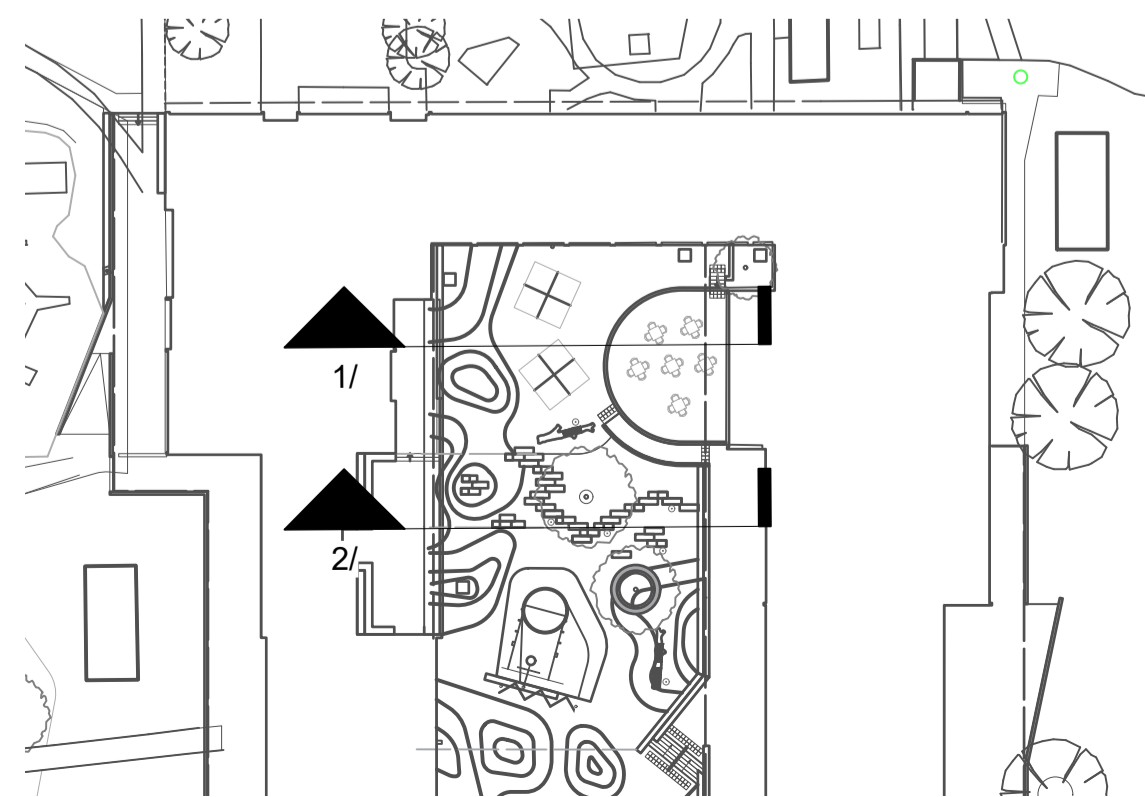


SECTION 2 - LOWER COURTYARD

Scale: 1:50



KEY PLAN



DATE	REV	AMENDMENTS
13/04/2026	A	DRAFT DA ISSUE
20/04/2026	B	DA ISSUE

**PROJECT**  
 SOUTH GEORGE TOWN PRIMARY  
 SCHOOL  
 FRANKLIN STREET, GEORGE TOWN

**CLIENT**  
 DEPARTMENT FOR EDUCATION,  
 CHILDREN AND YOUNG PEOPLE

**DRAWING TITLE**  
 COURTYARD SECTIONS

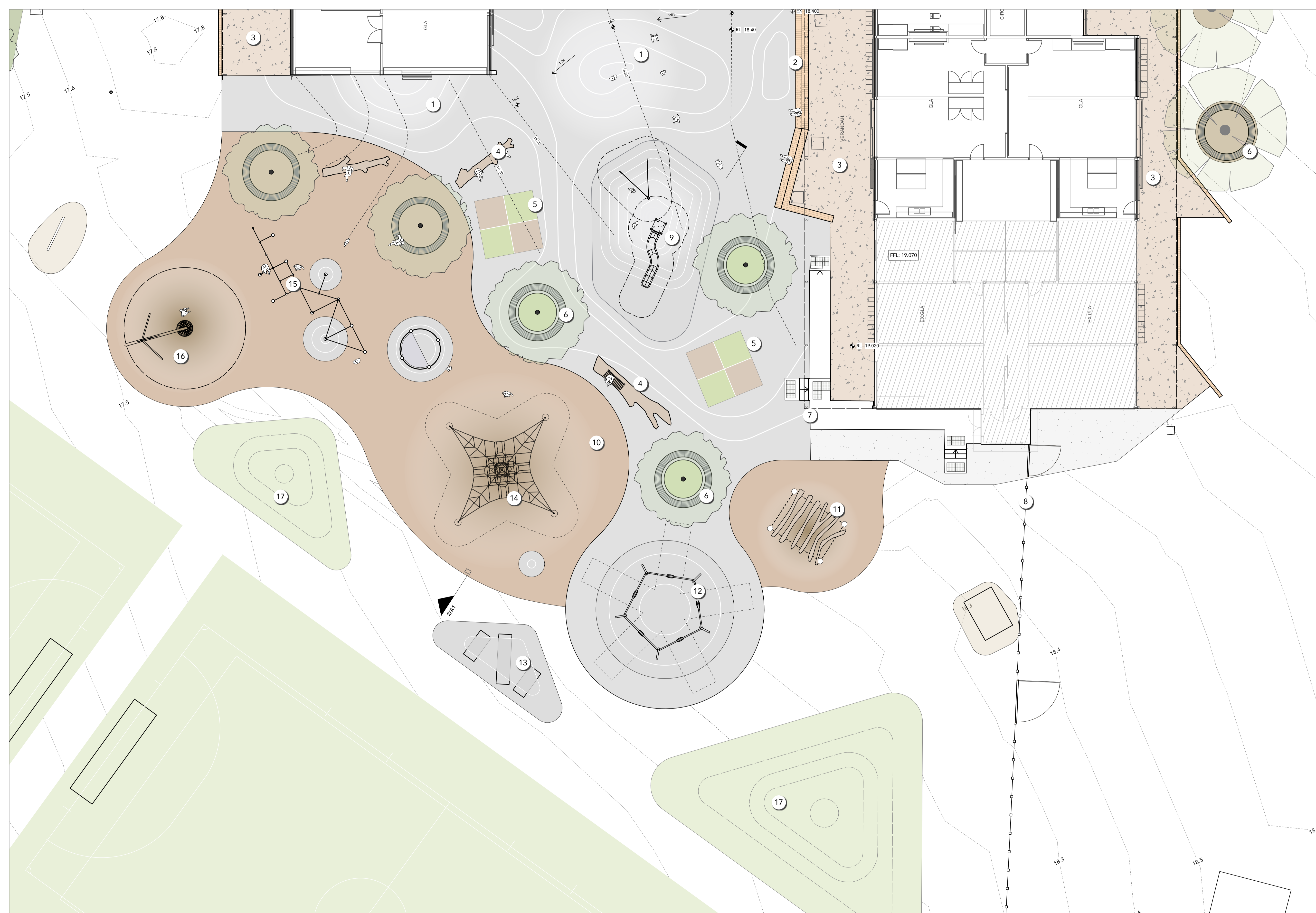
LANDSCAPE ARCHITECTS

**REALM** studios

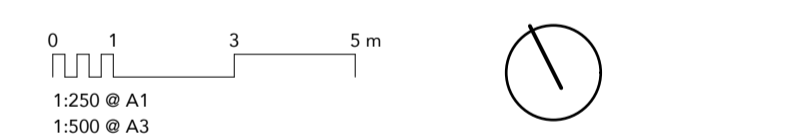
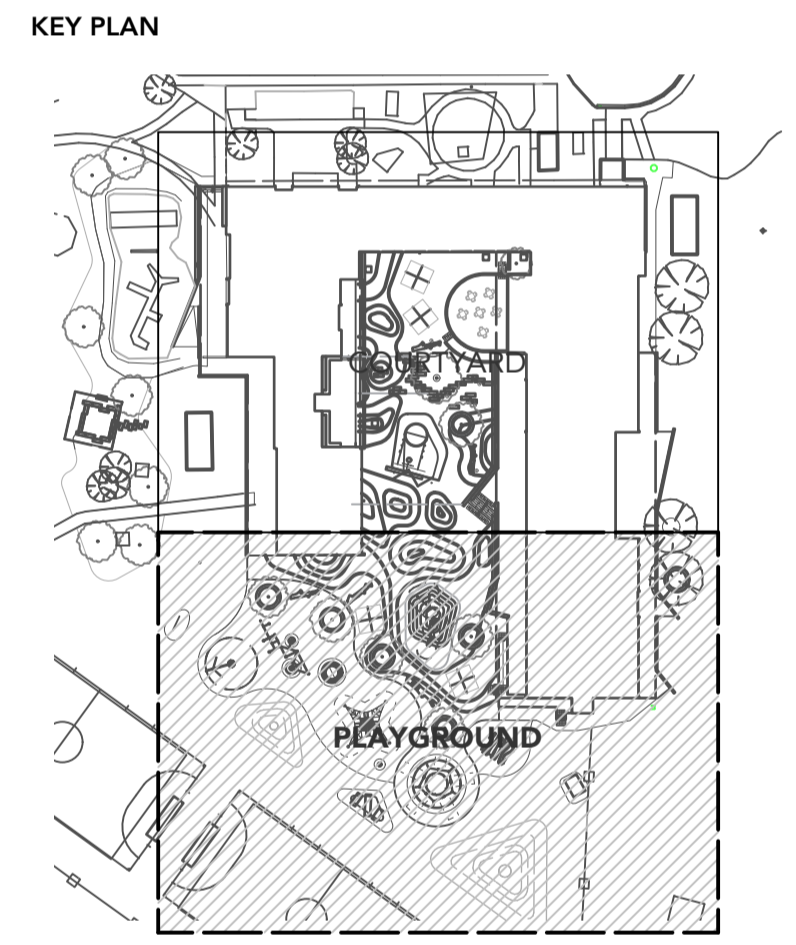
DRAWN	CHECKED	SCALE @ A1
BR	AH	1:50

**STATUS**  
 DRAFT DEVELOPMENT APPLICATION  
 NOT FOR CONSTRUCTION

DRAWING NO.	REVISION
25026-L202	B



- DRAWING NOTES:**
1. Mounds in the asphalt courtyard with painted 'contour' graphics
  2. Tiered brick seating edge
  3. Concrete footpath and veranda
  4. Log furniture, including plinth mounted benches.
  5. Painted handball courts
  6. Ring bench seats with internal tree and planting
  7. Existing concrete ramp and steps recently added to the building
  8. Existing fenceline and gates.
  9. Softfall mound with embankment slide and climbing ropes.
  10. Soft fall mulch
  11. Raised timber log structure
  12. Hexagon swing set
  13. Tunnels through softfall rubber mound
  14. Space net
  15. Parkour/agility course with custom steel structures
  16. Existing basket swing
  17. Turfed mounds viewing over fields and playground



DATE	REV	AMENDMENTS
13/04/2026	A	DRAFT DA ISSUE
20/04/2026	B	DA ISSUE

**PROJECT**  
 SOUTH GEORGE TOWN PRIMARY SCHOOL  
 FRANKLIN STREET, GEORGE TOWN

**CLIENT**  
 DEPARTMENT FOR EDUCATION,  
 CHILDREN AND YOUNG PEOPLE

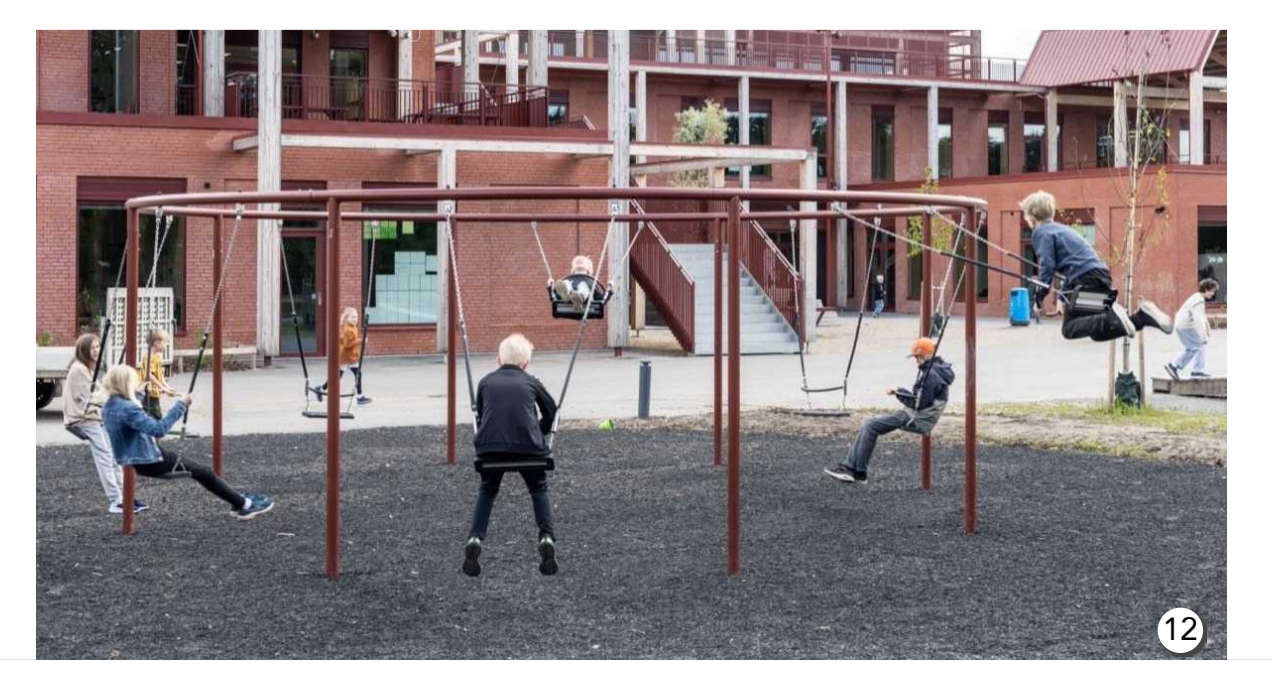
**DRAWING TITLE**  
 PLAYGROUND LANDSCAPE PLAN

**LANDSCAPE ARCHITECTS**  
**REALM studios**

**DRAWN** BR      **CHECKED** AH      **SCALE @ A1** 1:100

**STATUS**  
 DRAFT DEVELOPMENT APPLICATION  
 NOT FOR CONSTRUCTION

**DRAWING NO.** 25026-L203      **REVISION** B



13

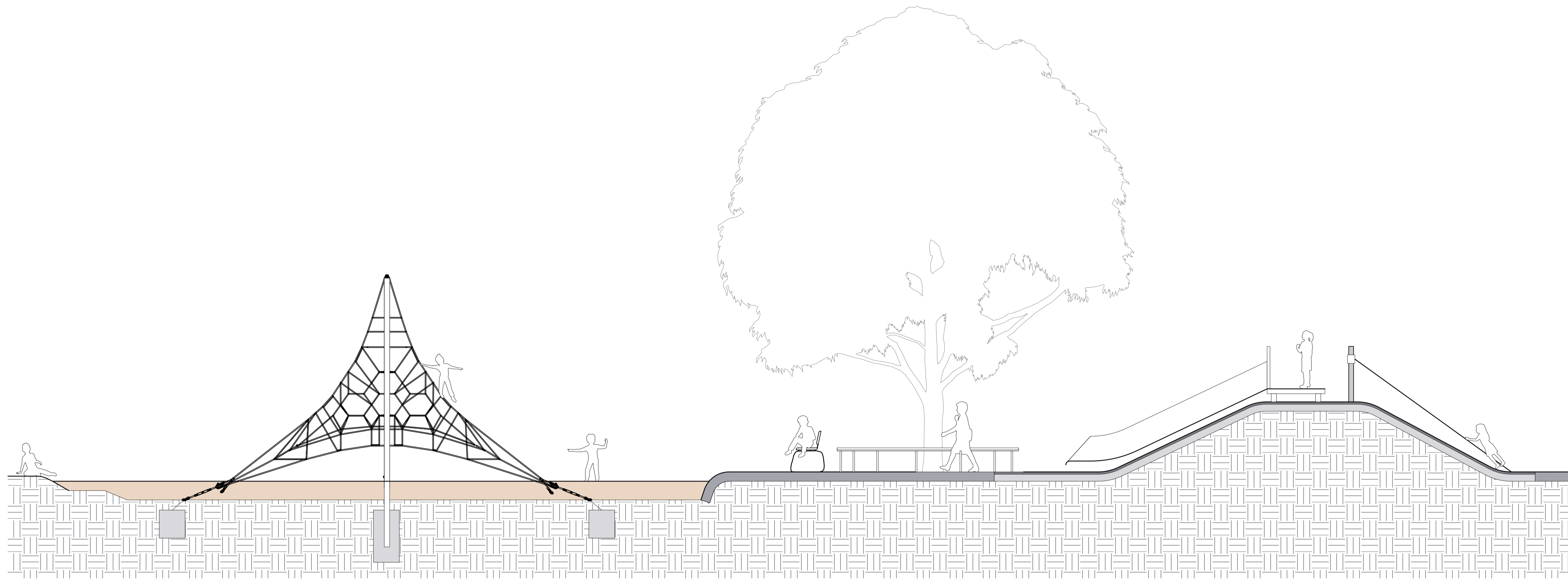
12

14

9) Soft Fall Rubber

9)

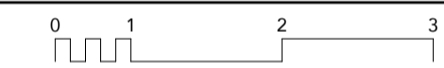
4)



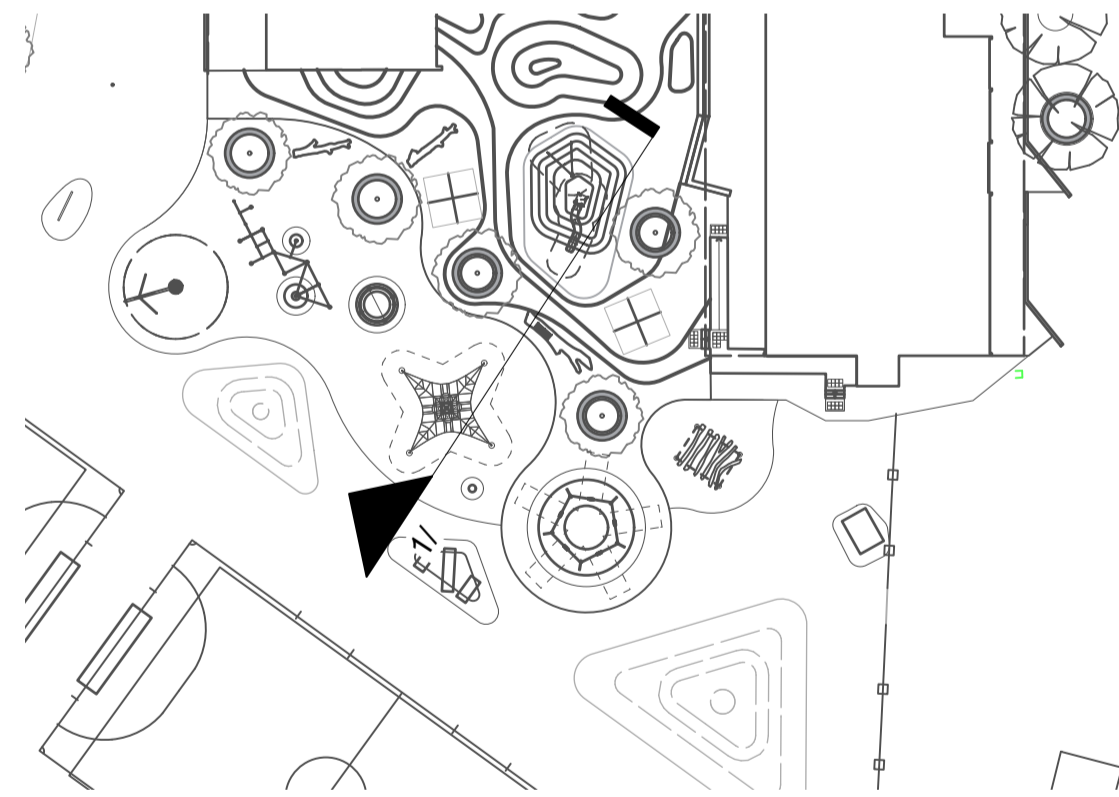
1

SECTION 3 - PLAYGROUND

Scale: 1:50



KEY PLAN



DATE	REV	AMENDMENTS
13/04/2026	A	DRAFT DA ISSUE
20/04/2026	B	DA ISSUE

**PROJECT**  
 SOUTH GEORGE TOWN PRIMARY  
 SCHOOL  
 FRANKLIN STREET, GEORGE TOWN

**CLIENT**  
 DEPARTMENT FOR EDUCATION,  
 CHILDREN AND YOUNG PEOPLE

**DRAWING TITLE**  
 PLAYGROUND SECTIONS

**LANDSCAPE ARCHITECTS**

**REALM** studios

DRAWN	CHECKED	SCALE @ A1
BR	AH	1:50

**STATUS**  
 DRAFT DEVELOPMENT APPLICATION  
 NOT FOR CONSTRUCTION

DRAWING NO.	REVISION
25026-L204	B